

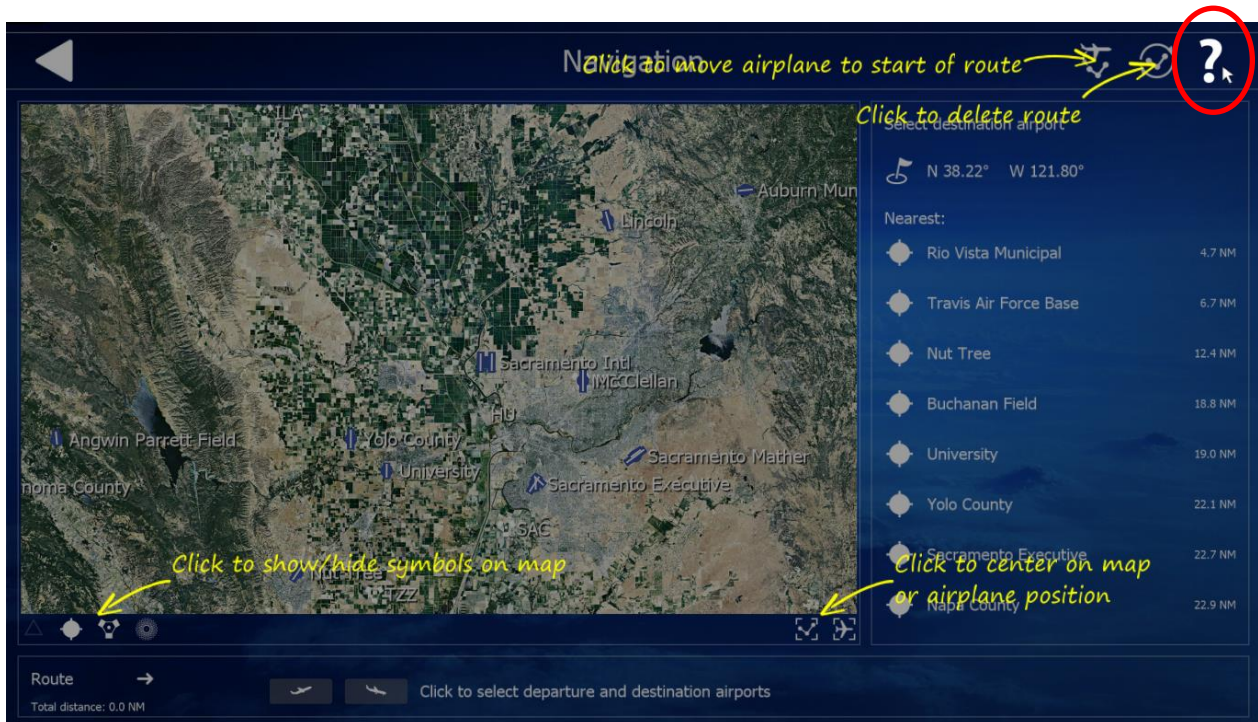
# aerofly FS 2: Rodeo's Tutorial Navigation

v1: 2017-02-03

This tutorial is for beginners of aerofly FS 2. Learn how to use the Navigation functions.  
On the start screen of aerofly select the button Navigation.

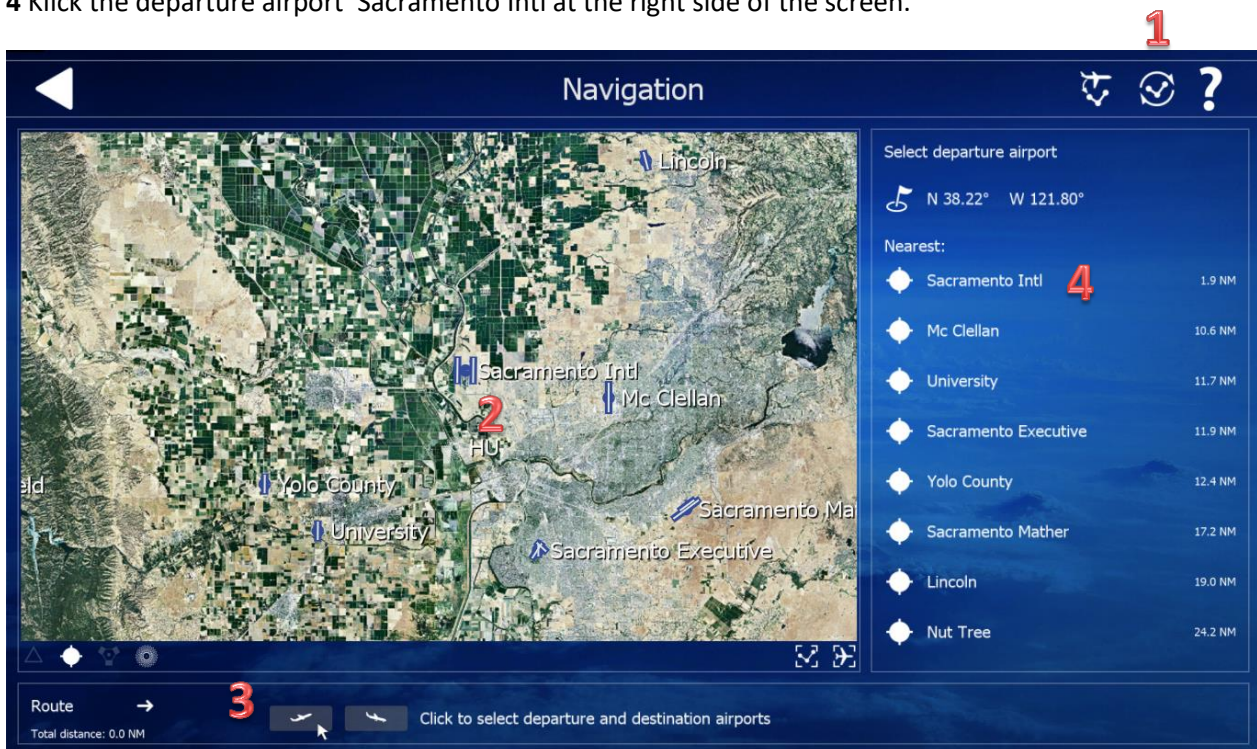


Just good to know: The Question Mark displays some help information.  
Press the button again to remove the help layer.



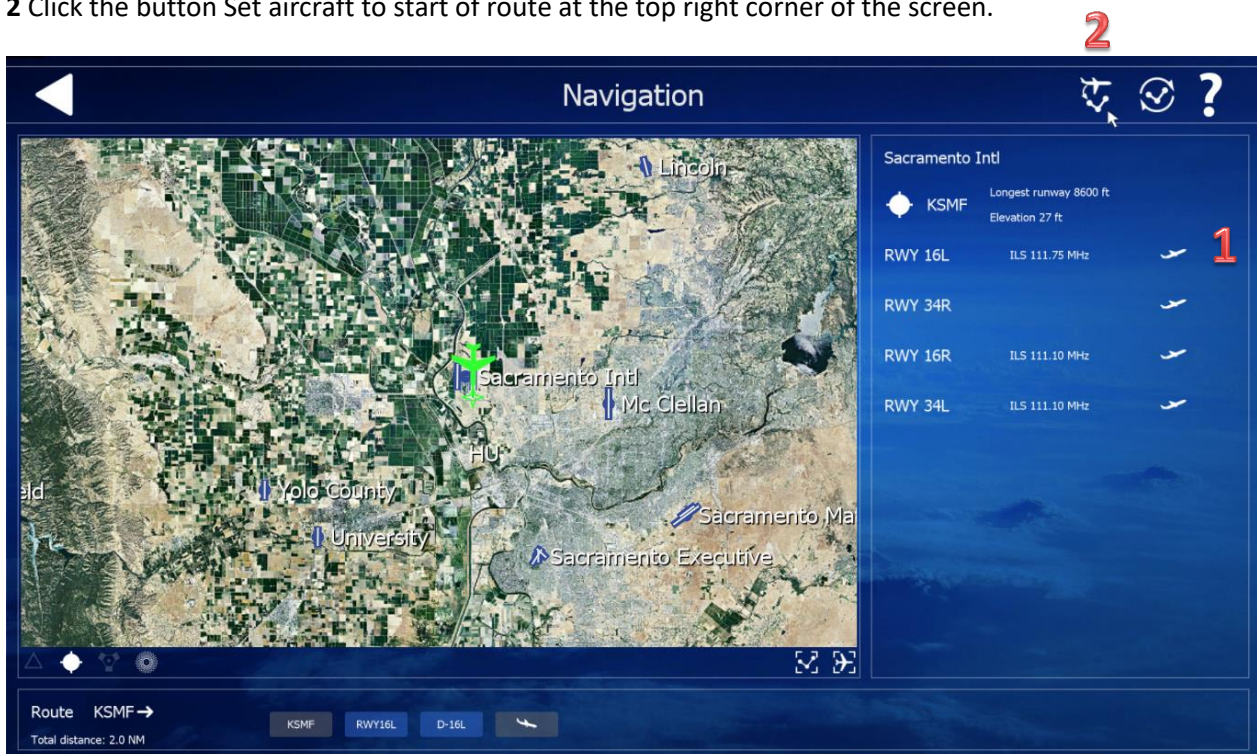


- 1 Press the button Delete route. This deletes all previous navigation settings.
- 2 Move your map with the mouse close to Sacramento Intl. Use the scroll wheel to adjust map scale.
- 3 Select the departure symbol at bottom of the screen.
- 4 Click the departure airport Sacramento Intl at the right side of the screen.



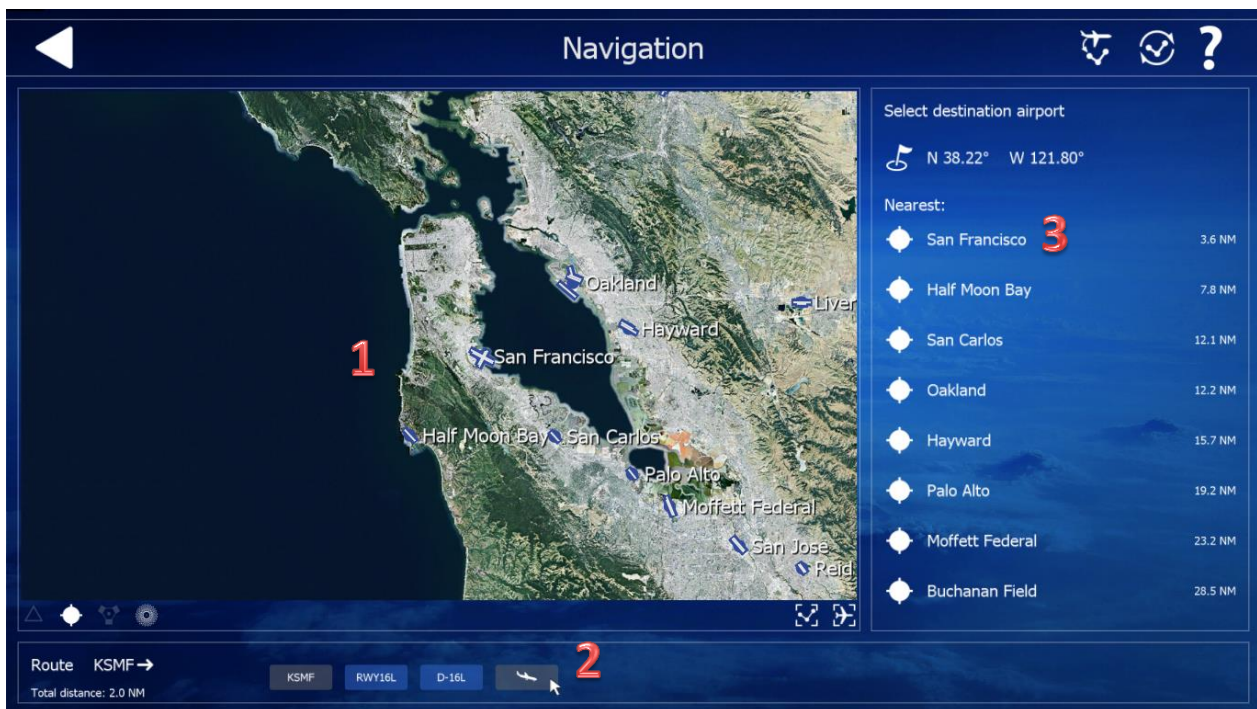
aerofly shows all available runways of Sacramento Intl.

- 1 Click the departure symbol behind RWY 16L.
- 2 Click the button Set aircraft to start of route at the top right corner of the screen.

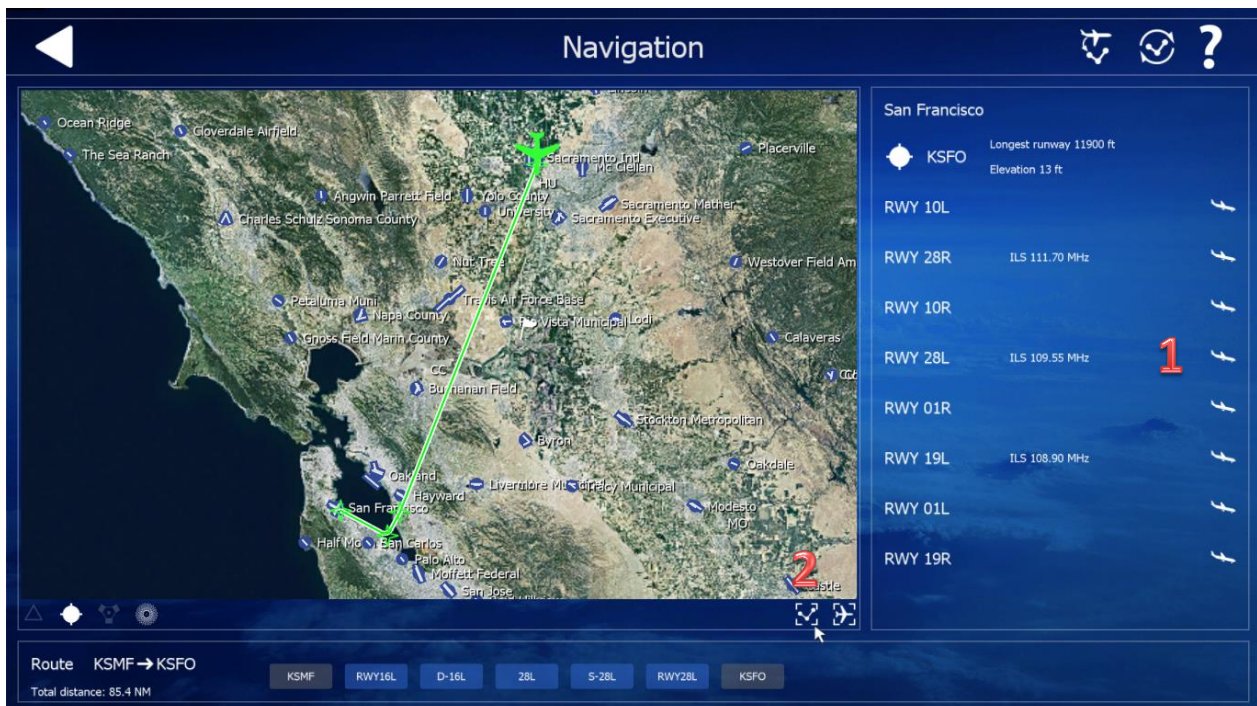




- 1 Move the map to San Francisco.
- 2 Click the arrival symbol at the bottom of the screen.
- 3 Select San Francisco at the right side of the screen.



- 1 Select arrival symbol of RWY 28L. ILS is available at 109.55 MHz.  
ILS means *Instrument Landing System* and provides horizontal and vertical guidance for landing.  
We will use this later.
- 2 Press the button Center route on map. Now your complete route is being displayed.

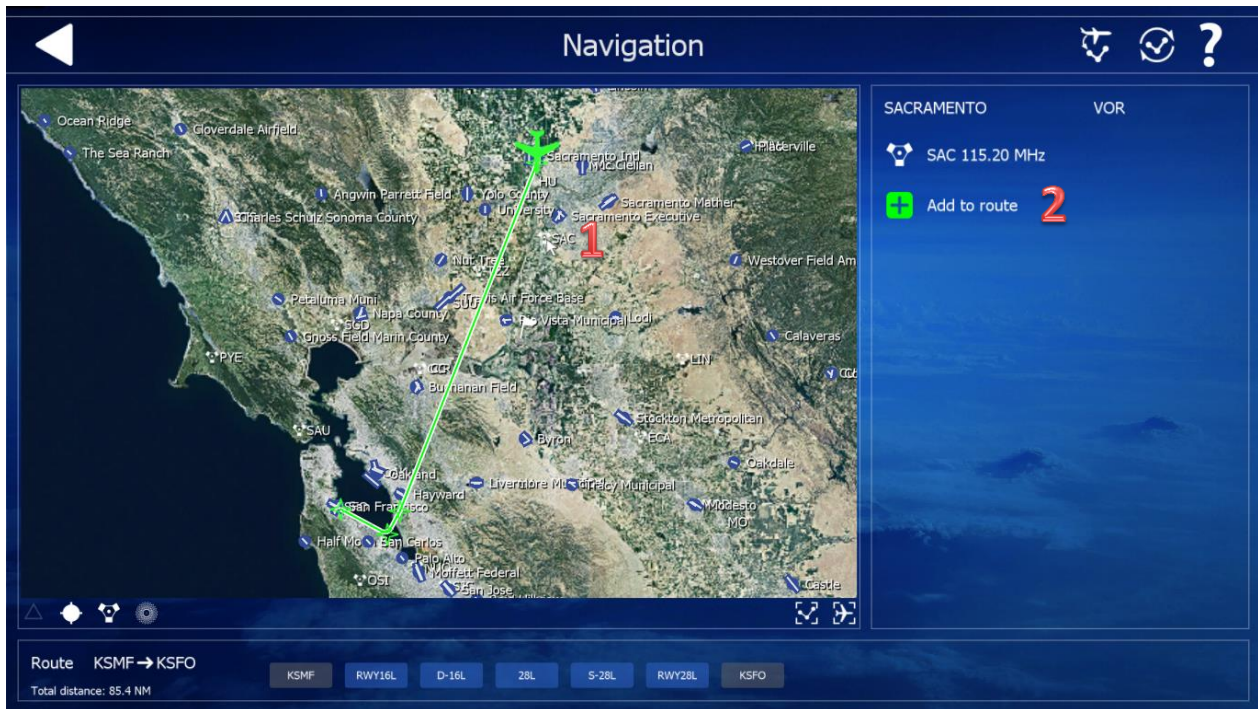




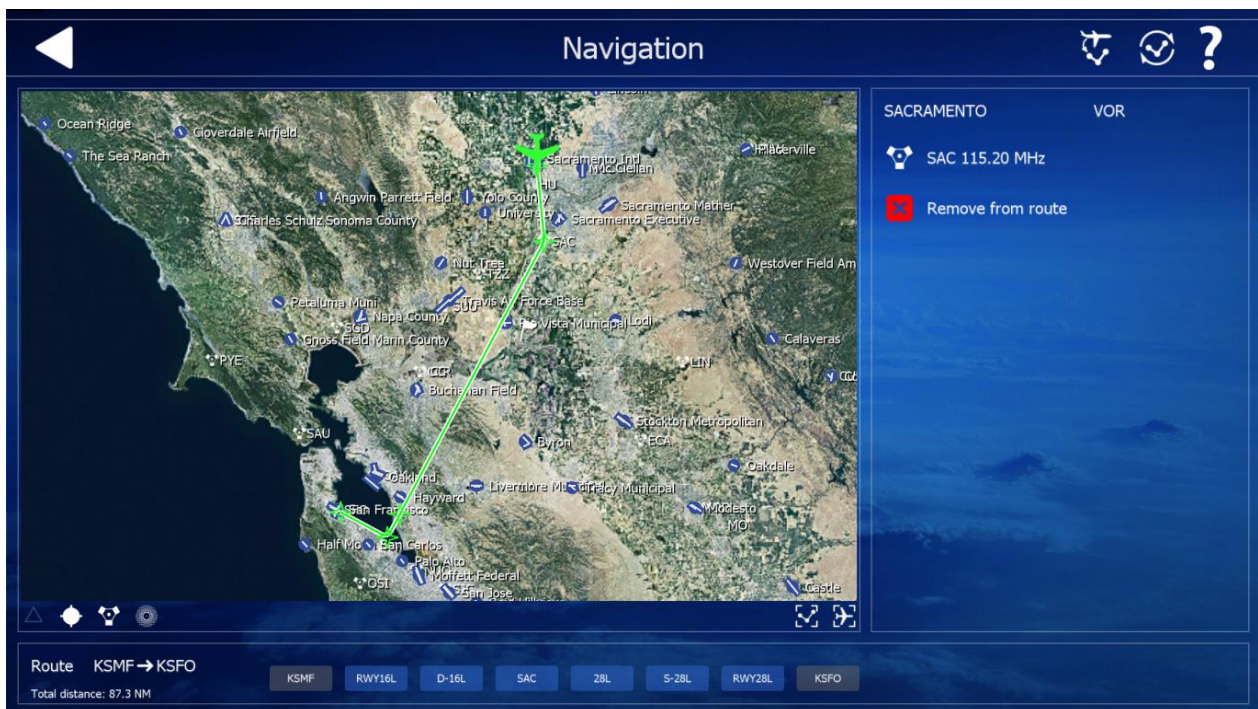
We don't want to turn immediately to the right after take off, so let's go on with an additional VOR. VOR means *Very High Frequency Omnidirectional Radio Range*. A VOR ground station sends out signals, which are used for standard air navigation for both commercial and general aviation.

1 Click SAC on the map.

2 Select Add to route at the right side of the screen.



The VOR is added and the new route drawn automatically.



You can add more VOR or remove them from your route again.

You're now ready for take off and you learned how to use the Navigation screen.