

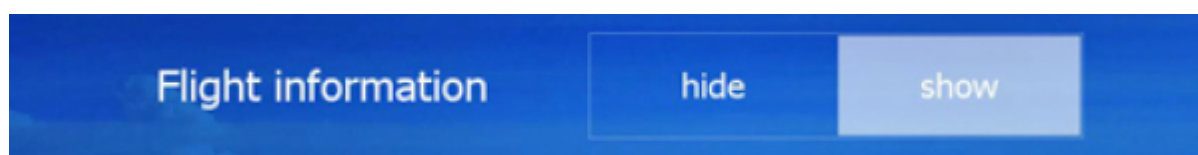
Flight Guides

If you are new to flight simulators you know first hand how intimidating it could be to get airborne. To make it easier for novice virtual pilots Aerofly FS 2 has several guides to make your first experience a better one.

Flight Information Bar

Displays the virtual cockpit bar at the top of the screen. This mini display can be useful if you prefer flying from an outside view. **Note** - The flight information strip can be toggled on and off by 'I' key or button of your choosing from within the controller configuration settings page.

The flight information bar can also be turned on and off from within the general settings.



1. Wind

Shows the current windspeed and direction with respect to the aircraft's orientation. This example shows a very weak wind from the left.

2. Flaps Indicator

Shows the position of your flaps in degrees

3. Power Indicator

Shows the actual engine output percentage

4. Heading Indicator

Shows the current heading in degrees. The magenta trend indicator bar shows what the heading will be in 6 seconds at the current rate of turn. For a standard turn rate of 180 degrees per minute, the trend indicator has a length equivalent to 18 degrees. The heading bug (the magenta symbol above the 'W' in this example) and magenta number to the left are displayed if a heading for autopilot operation is selected

5. Airspeed Indicator

Shows the IAS (indicated airspeed) in knots. The magenta trend indicator shows what the airspeed will be in 6 seconds. The color of the tape shows the airspeeds for the current aircraft:

- green represents normal range
- white represents airspeed range with flaps extended
- yellow represents operation in smooth air without abrupt control inputs
- red represents below stall speed at the low end

above velocity and never exceeds ('red line') at the high end The ground speed is displayed at the bottom. The target speed for autopilot operation will be displayed at the top as well as the magenta speed bug if selected.

6. Attitude Indicator

Shows the roll and pitch attitude of the aircraft with respect to the earth (artificial horizon).

7. Altimeter

Shows the current altitude above sea level in feet. Again, the magenta trend indicator shows what the altitude will be in 6 seconds at the current rate of climb. A bar having a length equivalent to 100 ft therefore indicates a rate of climb of 1000 ft/min. The height above ground is shown at the bottom. If a target altitude is selected, this will be displayed in magenta at the top and the altitude bug will be shown.

9. Vertical Speed Indicator (VSI)

Displays the current rate of climb or descent in feet per minute. For autopilot operation, the target rate of climb is shown at the top.

10. Nearest Airports

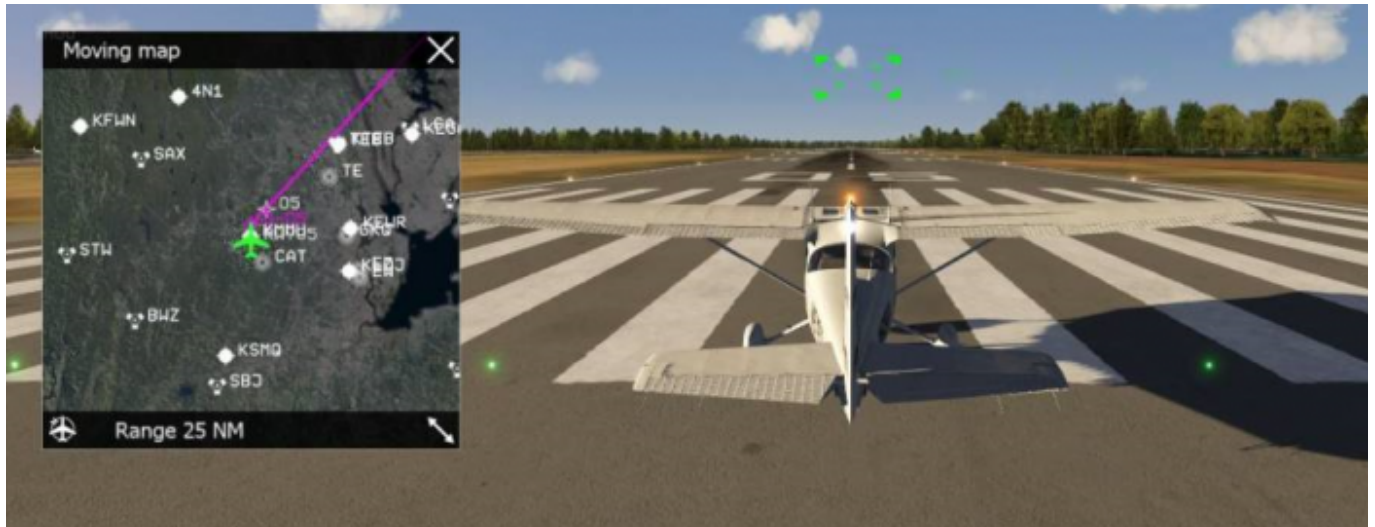
Shows the distance of and direction to the two nearest airports. The distances are displayed in nautical miles. The directions are shown with respect to the current heading. In this example, the nearest airport is at the 4 o'clock position at a distance of 6.6 nm. The second airport is right behind at a distance of 13 nm.

11. Replay Function

Allows for you to replay your previous flight.

Map Window

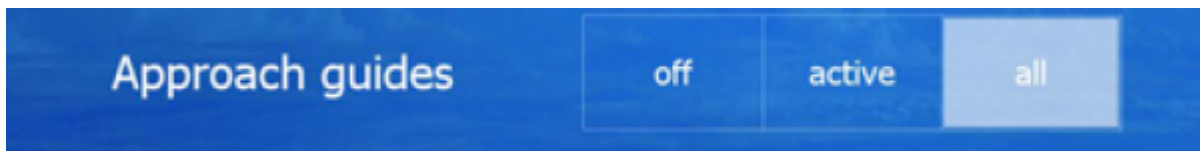
By pressing the 'M' key you can turn on the moving map overlay.



The map overlay can be used as a location guide as well as an easy way to follow a course while flying. The map window can be made larger or smaller by dragging the bottom corner of the map window, moved by dragging the window, or closed by pressing the X in the upper right of the window.

Flight Guides

When you set up a flight plan with a departure and destination airport selected, you can turn on approach guides by choosing active or all. The approach guides are green “follow me” boxes that get you to your destination by following them.





From:

<https://www.aerofly.com/dokuwiki/> - Aerofly FS Wiki

Permanent link:

<https://www.aerofly.com/dokuwiki/doku.php/manual:beginners3?rev=1535508832>

Last update: **2018/08/29 04:13**

